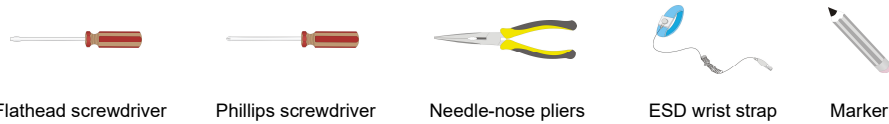
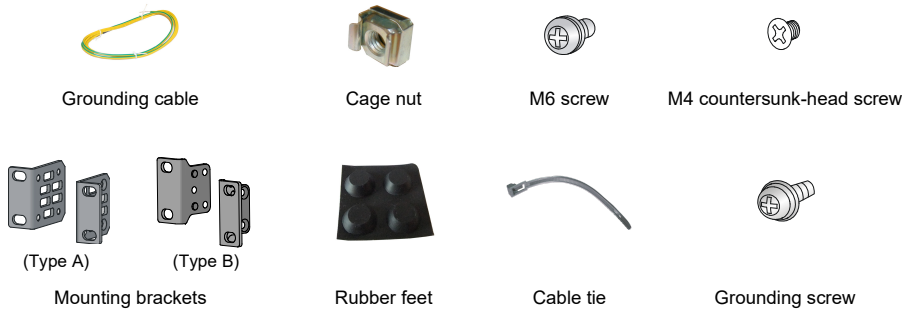


Tool list

The installation tools are not provided with the switch. Prepare them yourself as required.



Installation accessories



The applicable installation accessories vary by switch model. Some accessories are not provided with the switch. The packing list describes the accessories provided with the switch.

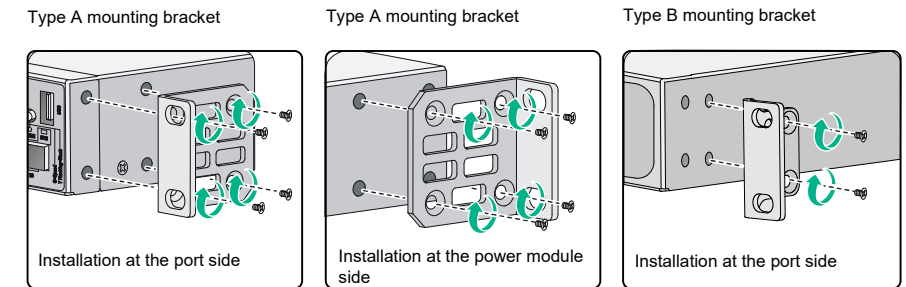
Wear an ESD wrist strap, and make sure the wrist strap makes good skin contact and is reliably grounded.

Mounting the switch in a rack

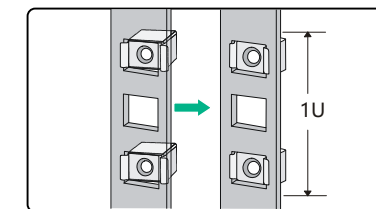
The applicable mounting brackets vary by switch model. Some switch models provide two installation positions on the two sides for mounting brackets: one at the port side and one at the power module side. Select an installation position for the mounting brackets as required.

Four screws are required to attach a Type A mounting bracket. Two screws are required to attach a Type B mounting bracket.

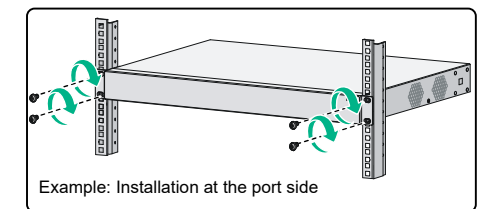
1 Attaching mounting brackets to the switch



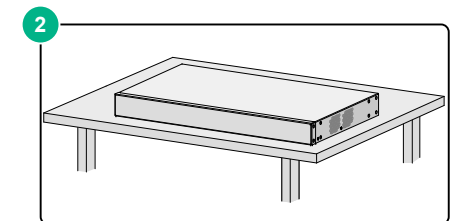
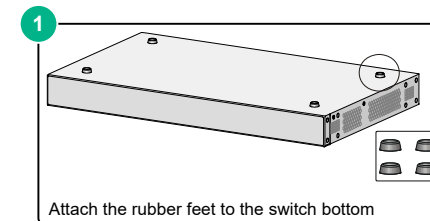
2 Attach cage nuts to the rack posts



3 Mount the switch in the rack

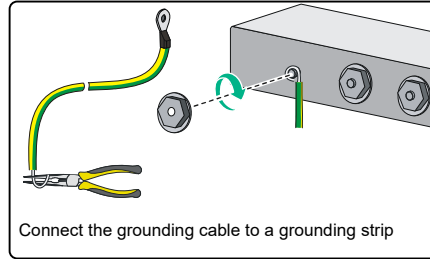
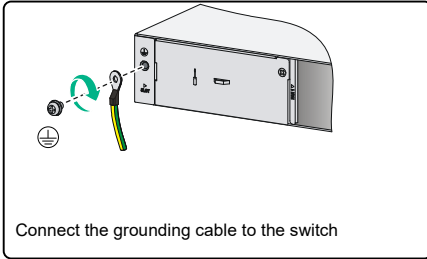


Mounting the switch on a workbench



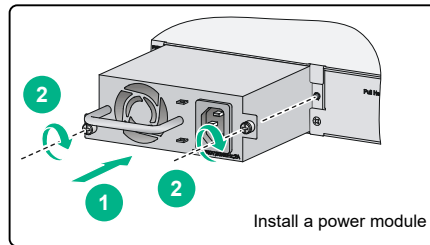
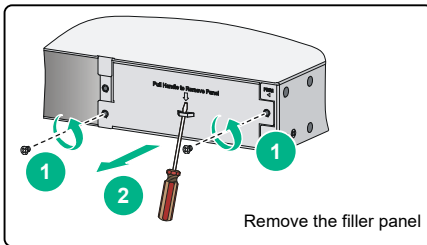
Grounding the switch

Correctly connecting the switch grounding cable is crucial to lightning protection and EMI protection. Use the grounding cable provided with the chassis to ground the switch.



Installing and removing a power module

This section is applicable only to switch models that use removable power modules.

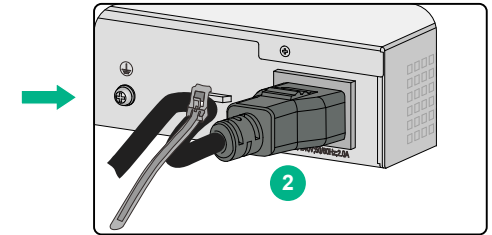
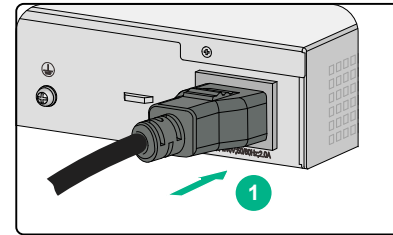


Connecting the power cord

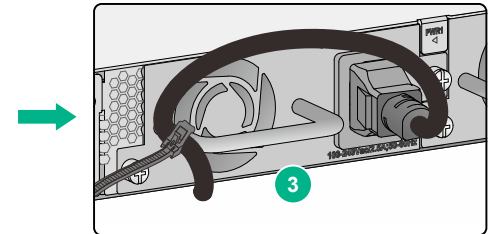
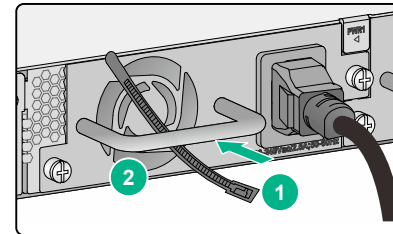
Before connecting the power cord, connect the grounding cable and make sure the switch is reliably grounded. To avoid bodily injury, connect the power cord first to the switch and then to the power supply system.

1 Connecting the power cord for an AC power module.

Method 1



Method 2



2 Connecting the power cord for a DC power module.

