

DS-3E0326P-E(C) 100 Mbps Long Range PoE Switch



DS-3E0326P-E(C) switches are layer 2 100 Mbps PoE switches, providing advanced PoE power supply technology and Gigabit networks design on the basis of high-performance access to ensure stable data upload. The switches support long range, port isolation, and PoE watchdog function.

- Intelligent PoE management.
- Up to 300 m long range PoE transmission.
- Port isolation to improve network security.
- 6 kV surge protection to improve reliability in harsh environment.
- PoE watchdog to auto-detect and restart cameras that do not respond.

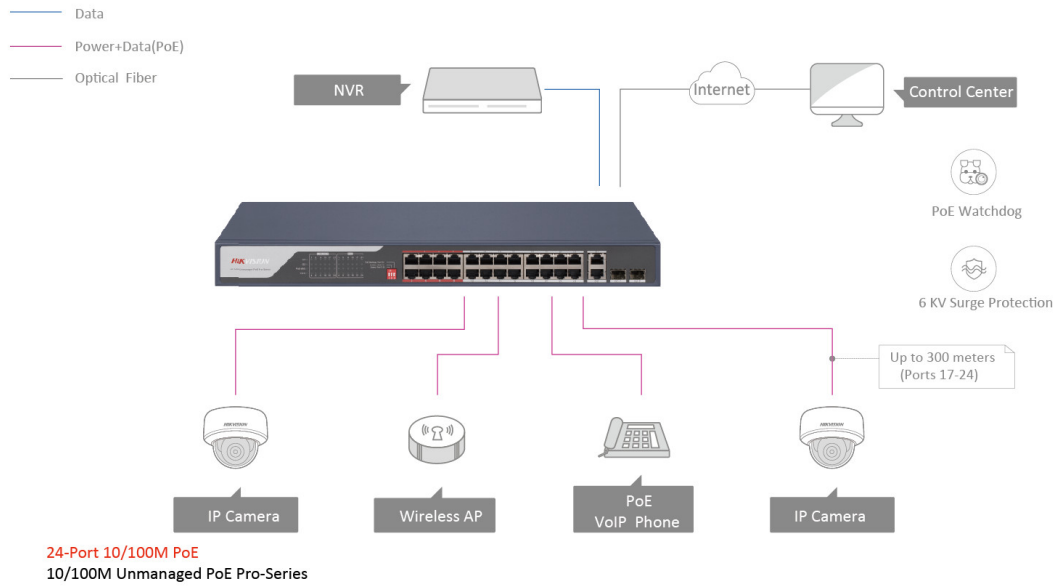
▪ Specification

Model		DS-3E0326P-E(C)
General	Shell	Metal material
	Net Weight	2.785 kg (6.14 lb)
	Gross Weight	3.54 kg (7.80 lb)
	Dimensions (W × H × D)	440.0 mm × 44.0 mm × 220.8 mm (17.3" × 1.7" × 8.7")
	Operating Temperature	0 °C to 45 °C (32 °F to 113 °F)
	Storage Temperature	-40 °C to 85 °C (-40 °F to 185 °F)
	Operating Humidity	5% to 95% (no condensation)
	Relative Humidity	5% to 95% (no condensation)
	Power Supply	100~240 V AC, 50/60 Hz, Max. 6.5 A
	Max. Power Consumption	400 W
	Power Consumption in Idle	30 W
	Installation Mode	Rack (equipped with mounting ears)
	Surge Protection	6 kV
Network Parameters	Ports	24 × 10/100 Mbps PoE port, 2 × Gigabit combo
	MAC Address Table	16 K
	Switching Capacity	8.80 Gbps
	Packet Forwarding Rate	6.55 Mpps
	Internal Cache	4 Mbits
PoE Power Supply	PoE Standard	IEEE 802.3af; IEEE 802.3at
	PoE Power Pin	8-pin power: 1/2(-), 3/6(+), 4/5(+), 7/8(-)
	PoE Port	PoE: Ports 1 to 24
	Max. Port Power	30 W
	PoE Power Budget	370 W
Dialing Function	Long Range	Ports 17 to 24: up to 300 m Long range performance may vary depend on camera model or cable condition.
	Port Isolation	Ports 1 to 24: port isolation mode to improve network security. Ports in an isolation group cannot communicate with each other, but they can communicate with ports outside the isolation group.
	PoE Watchdog	Ports 1 to 24: auto detect and restart the cameras that do not respond.
Software Function	VIP Port	Ports 1 to 8: data on VIP ports is preferentially forwarded when bandwidth resources are insufficient.
Approval	EMC	FCC (47 CFR Part 15, Subpart B), CE-EMC (EN 55032: 2015+A11: 2020, EN IEC 61000-3-2: 2019, EN 61000-3-3: 2013+A1: 2019, EN 50130-4: 2011+A1: 2014, EN 55035: 2017+A11: 2020), IC (ICES-003: Issue 7:2020), RCM (AS/NZS CISPR 32: 2015)
	Safety	UL (UL 60950-1), CB (AMD1:2009, AMD2:2013, IEC 62368-1: 2014 (Second Edition), CE-LVD (EN 62368-1: 2014+A11: 2017)
	Chemistry	CE-RoHS (2011/65/EU)

▪ Available Model

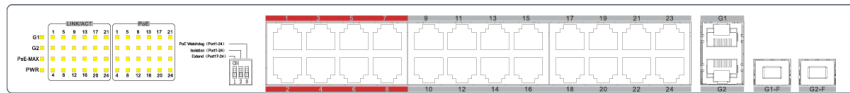
DS-3E0326P-E(C)

▪ Typical Application



▪ Physical Interface

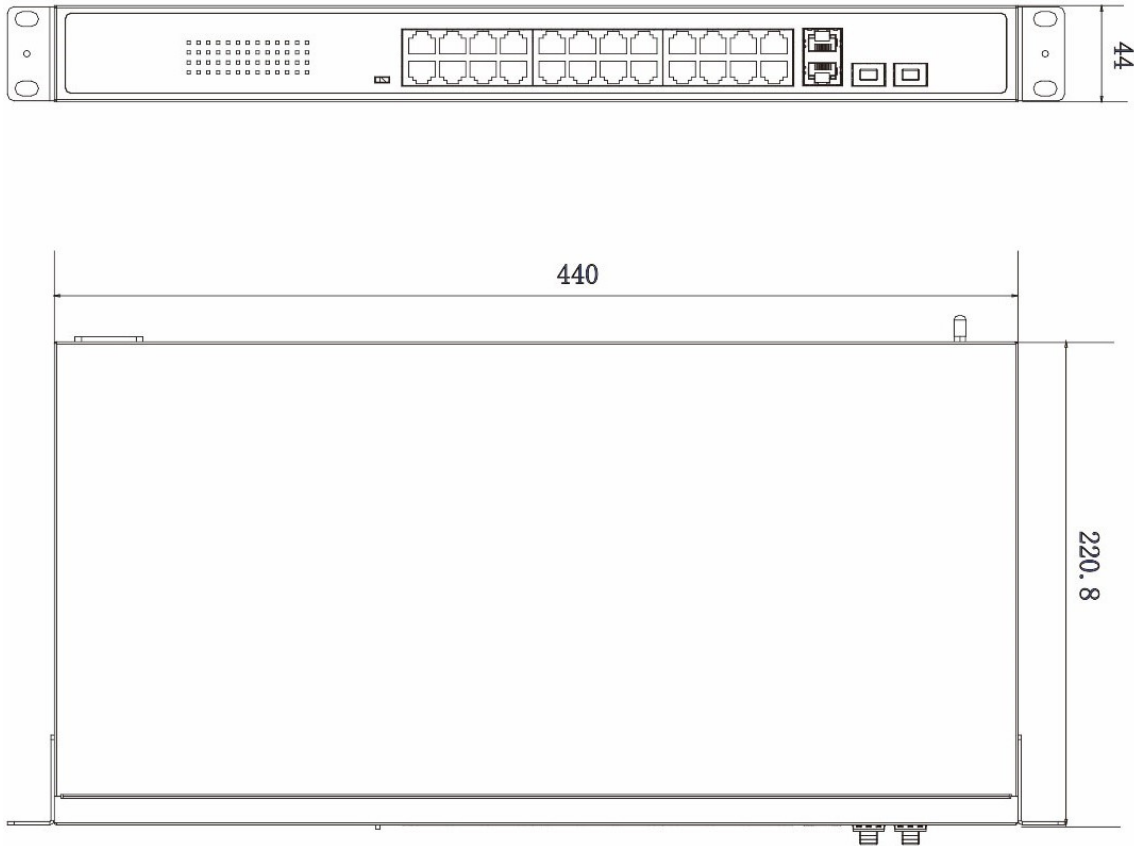
Front Panel



Rear Panel



▪ Dimension (Unit: mm)



Headquarters

No.555 Qianmo Road, Binjiang District,
Hangzhou 310051, China
T +86-571-8807-5998
www.hikvision.com



Follow us on social media to get the latest product and solution information.

