

## FTN-ST/AM

- Digital Anti-masking (AM only)
- 5m/2m narrow range
- 190° horizontal flexibility
- Perfect pet immunity
- Super Multi Dimension Analysis Logic
- Double conductive shielding
- Intelligent AND logic



## FTN-R/RAM

- Complete battery operation
- Digital Anti-masking (RAM only)
- 5m/2m narrow range
- 190° horizontal flexibility
- Perfect pet immunity
- Super Multi Dimension Analysis Logic
- Double conductive shielding
- Intelligent AND logic



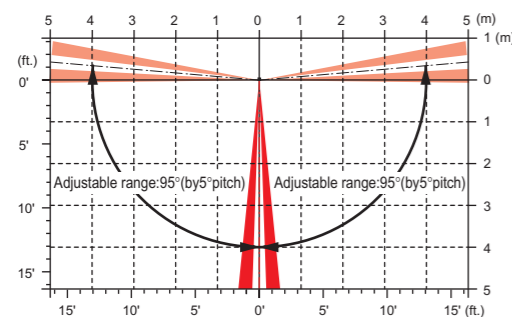
## SPECIFICATIONS

Model	FTN-ST	FTN-AM	FTN-R	FTN-RAM
Detection method			Passive infrared	
PIR coverage			5 × 1m (16'5" × 3'3")	
Detection length limit			2 m, 5 m (6'7", 16'5")	
Detectable speed			0.3 - 1.5 m/s (1' - 4'11"/s)	
Sensitivity			2.0°C (at 0.6 m/s) (3.6°F (at 2'/s))	
Operation voltage	9.5 - 18 V DC		2.5 - 10 V DC	
Power input			3 - 9 V DC (Lithium or Alkaline Battery)	
Current draw	17mA(max.) (at 12 V DC)	20mA(max.) (at 12 V DC)	9 μA (at stand-by) / 3mA(max.) (at 3 V DC)	10 μA (at stand-by) / 3mA(max.) (at 3 V DC)
Alarm period	2.0 ± 1.0sec.		Approx. 120 sec. (LED blinks)	
Warm-up period	Approx. 60 sec. (LED blinks)		Approx. 120 sec. (LED blinks)	
Alarm output	N.C./N.O. Selectable 28 V DC 0.1 A (max.)		N.C./N.O. Selectable-Solid State Switch 10 V DC 0.01 A(max.)	
Trouble output	N.C. 28 V DC 0.1 A (max.), open when the cover is removed.		N.C./N.O. Selectable-Solid State Switch 10 V DC 0.01 A(max.)	
LED indicator	Light/Blink: Warm-up, alarm, masking detection (FTN-AM only)		Enable: During DIP switch 1 (WALK TEST MODE) or DIP switch 4 (LED) ON Disable: During normal operation Light/Blink: Warm-up, alarm, masking detection (FTN-RAM only)	
Operation temperature	-20 - +60°C (-4 - +140°F)			
Environment humidity	95% max.			
Weatherproof	IP55			
Mounting	Wall (Outdoor, Indoor)			
Mounting height	0.8 - 1.2 m (2'7" - 3'11")			
Weight	100 g (3.5 oz.)		190 g (6.7 oz.)	
Accessories	screw (3 × 20 mm) × 2		Connector for POWER and ALARM, connector for TROUBLE, plate nut × 2, screw (M3 × 10 mm) × 2, screw (3 × 20 mm) × 4, sponge for transmitter	

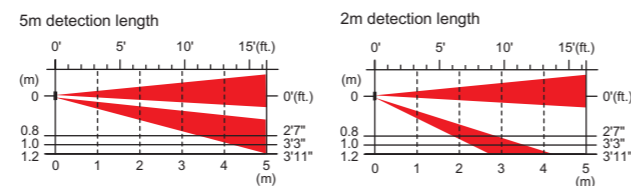
\*Specifications and design are subject to change without prior notice.

## COVERAGES

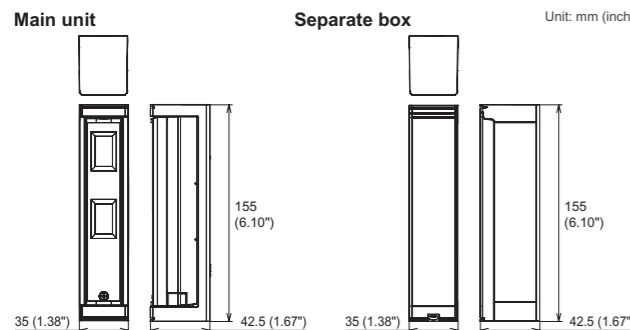
### Top view



### Side view



## DIMENSIONS



## OPTIONS

### Wall tamper (WRS-02)

for FTN-ST/AM



### Wall tamper (WRS-03)

for FTN-R/RAM



COMPACT  
OUTDOOR  
DETECTOR

fit  
series



fit for ALL

not only for a garden but also for a balcony  
not only for a wall side but also an area protection  
not only for a daytime but also for a nighttime



Introducing No.1  
OPTEX advantage.



**OPTEX CO., LTD.** (ISO 9001 Certified / ISO14001 Certified)  
5-8-12 Ogoto, Otsu, Shiga, 520-0101 Japan  
TEL +81(0)77 579 8670 FAX +81(0)77 579 8190  
<http://www.optex.co.jp/e/>  
**OPTEX INCORPORATED (USA)** <http://www.optexamerica.com/>  
**OPTEX (EUROPE) LTD. (UK)** <http://www.optex-europe.com/>  
(ISO9001 Certified)  
**OPTEX SECURITY SAS (FRANCE)** <http://www.optex-security.com/>  
**OPTEX KOREA CO., LTD. (KOREA)** <http://www.optexkorea.com/>  
**OPTEX SECURITY Sp. z o.o. (POLAND)** <http://www.optex.com.pl/>  
**OPTEX (DONGGUAN) CO., LTD.** <http://www.optexchina.com/>  
Shenzhen office (CHINA)





## fit for ALL

fit at window



fit at poolside



fit at garage



fit at sidewalk



fit at balcony

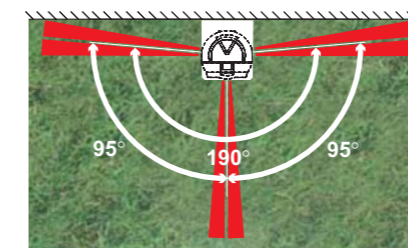


fit at front entrance



## Product features

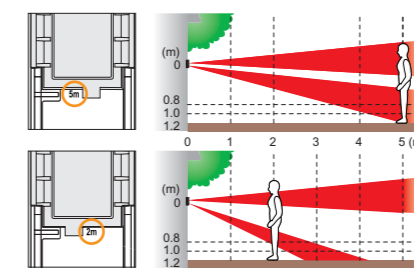
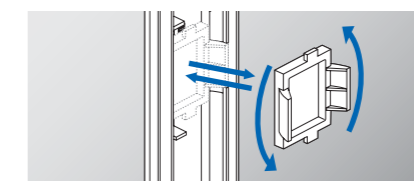
Built in bracket (190°)



Built-in bracket enables horizontal rotation of 190 degrees. Unwanted object can be avoided with ease.



5m/2m switchable lens

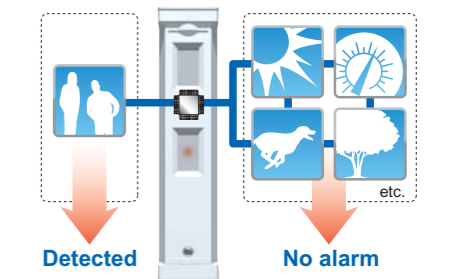


Changing the detection length is easy. Adjust the mounting height or simply turn the lens upside down.

SMDA Logic

SMDA(Super Multi Dimension Analysis) Logic brought the ultimate sensitivity optimization. Every motion is analyzed before signaling an alarm to reduce false and missed detections. Consequently environment reaction capability becomes 24 times more.

environmental capability



# fit at home

amplification through simplification

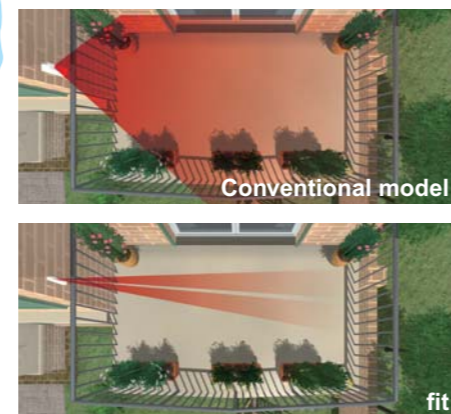
### Compact design

Security is important but I don't want to disturb how my house looks. I like "fit".



### Flexibility

"fit" is the perfect option for a balcony with greens because its detection area is so flexible.



## Battery operated model

### Model FTN-R/RAM

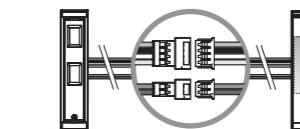
Save installation time and cost

FTN-R/RAM are battery operated model and therefore requires no complicated wiring. It saves installation time and cost.



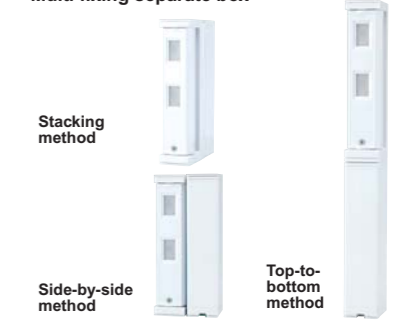
### Easy connection

FTN-R/RAM can be connected to the transmitter with connectors. It makes installation and battery replacement much easier and quicker.



Maximum transmitter size  
H130 X W30 X D35mm  
(H5.12" X W1.18 X 1.38)

### Multi fixing separate box



\*1. According to our survey on March, 2010.